



Vlaanderen
verbeelding werkt

imec

RESEARCH IN FLANDERS

General overview

Flemish S(T)I system

Flemish Research Funding Channels

Social inclusion and Welcoming International researchers

Flemish S(T)I system

Knowledge institutions

- **Vital for pushing technological boundaries, creating knowledge and sharing innovative ideas in Flanders**
 - 5 university associations (blue)
 - Bringing together one of the 5 Flemish universities with 1 or more university colleges
 - Mission and goals situated on the research, educational and service level
 - Universities as the pillar for academic research
 - 4 strategic research centres (green)
 - Active in a specific research area and co-founders of several spin-off or start-up companies, often based in breakthrough research
 - Combine scientific excellence with industrial relevance
 - Scientific and knowledge institutes (pink)
 - Each with a specific thematic focus

Knowledge institutions

ASSOCIATIE
KU LEUVEN



associatie
universiteit & hogescholen
antwerpen



ASSOCIATIE
UNIVERSITEIT GENT



universitaire
associatie
BRUSSEL

imec
embracing a better life



FLANDERS
MAKE
DRIVING INNOVATION IN MANUFACTURING



Meise
Botanic Garden

ILVO
Institute for Agricultural
and Fisheries Research

RESEARCH INSTITUTE
NATURE AND FOREST

Flanders
Heritage
Agency

KMSKA



INSTITUTE
OF TROPICAL
MEDICINE
ANTWERP



KMDA
KONINKLIJKE MAATSCHAPPIJ VOOR
DIERKUNDE VAN ANTWERPEN



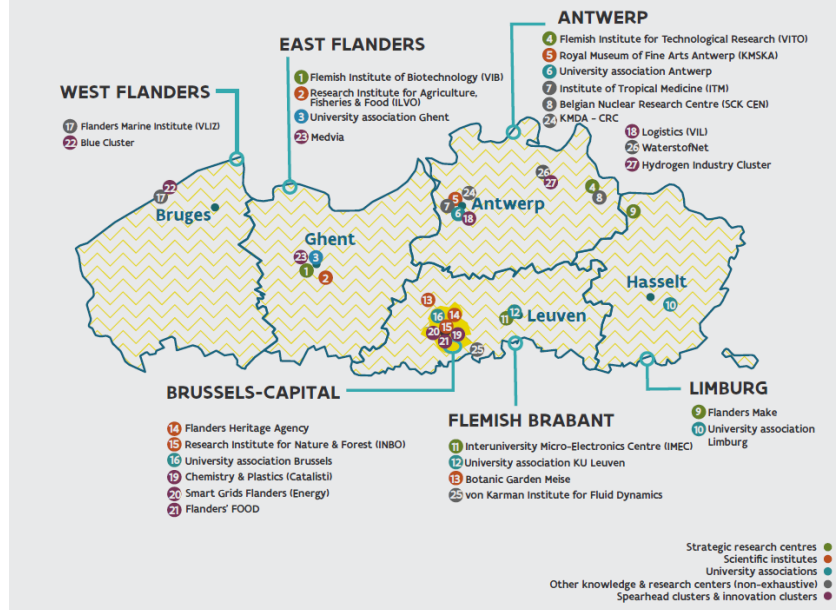
Antwerp
Management
School



Main research and economic actors

MAIN RESEARCH AND ECONOMIC ACTORS
IN THE FLEMISH STI-LANDSCAPE

Figure 18



Flemish research funding channels

Flemish funding agencies

FWO (Research Foundation Flanders): one-stop shop for researchers

- Fundamental and strategic basic research
- Fellowships & research projects
- International mobility and cooperation
- Research infrastructures
- Clinical research programmes (TBM, FKM, ...)

VLAIO (Flanders Agency Innovation and Entrepreneurship):

- economic and innovation support for businesses, innovation actors
- support at academic level for research conducted at the request of companies (Baekelandmandate,...)

PMV: Flanders Holding Company (start-ups, spearhead sectors,...)

LRM: Investment company for region Limburg

Funding for higher education institutions

allocated on fixed criteria and then granted on the basis of intra-university competition

IOF (Industrial Development Fund)


- In the short to medium term, to stimulate interaction between the association and the business community and to build up a portfolio of application-oriented knowledge within the association.
- In the medium to long term, to better alignment of strategic basic research and applied scientific research with economic needs, as well as the application and commercialisation of the accumulated portfolio of knowledge within the business community.

Support for Interface activities

- Focus on personnel costs for TTO
- Activities for connecting with industry, valorisation, Spin-off creation,...

BOF (Special Research Fund):

- Basic research Funding (fundamental, groundbreaking research)
- Funding for strengthening academic working conditions and research excellence: Tenure Track, Methusalem



Social Inclusion & Welcoming International Researchers

International Houses

- **Key interlocker in the Flemish Welcome Strategy and the social integration of expats**
 - An information, knowledge, and service hub for international individuals and their families, as well as for organizations in their respective regions
 - Organised on a provincial level
- **Main purpose to offer support in affairs related to relocation, social integration, and living and working in the region of residence**
- **Public-Private Partnerships based on mixed financing + quadruple helix structure**
 - Funding from the Flemish government (initial funding of 100k for 2024 – 2025)
 - Aims to strengthen existing fragmented initiatives, ensure accessible support, and promote integration
 - Efforts to streamline operations across all Houses



 International House
West Flanders



 International House Antwerp

EXPAT CENTRE
POM Limburg

 international house
leuven